



HARDLINE

YOU ENVISION, WE CREATE

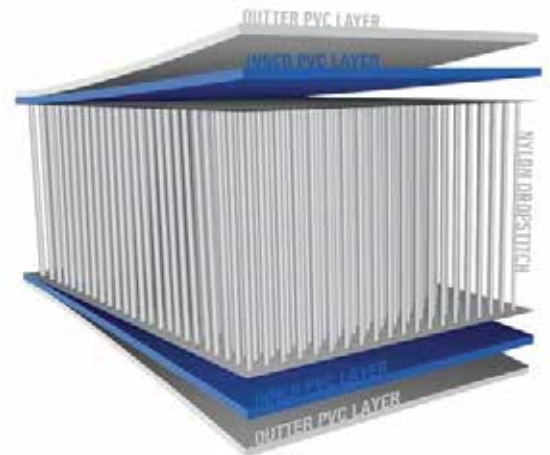
HARDLINE PRODUCT CATALOG

**Innovative Solutions for Military,
Tactical, Rescue, and
Humanitarian Operations**

Material Innovation:

Urethane and PVC-Coated Double Wall Fabric (DWF)

Hardline's product line is built on the foundation of **urethane and PVC-coated double wall fabric (DWF)**—an advanced material engineered for unmatched performance in durability, scalability, and resilience.



Material benefits:



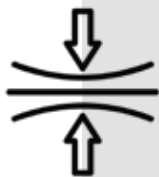
Pressure Ratings:

Requires only 7 to 15 PSI, achieving exceptional structural integrity and load-bearing capacity for applications on land and water (Without dangerous high pressure).



Scalability:

Modular designs enable products to be configured into virtually any form factor, meeting diverse operational needs.



Resilience:

Engineered to withstand harsh environments, including heavy loads, extreme heat and cold temperatures, harsh weather and rugged operational conditions.

RMBS – Rapid Modular Building System

Problem:

Conventional structures are time-intensive to construct and lack adaptability for dynamic field environments.

Solution:

The **RMBS** offers a quick-to-assemble, scalable system for barracks, command centers, or medical facilities.

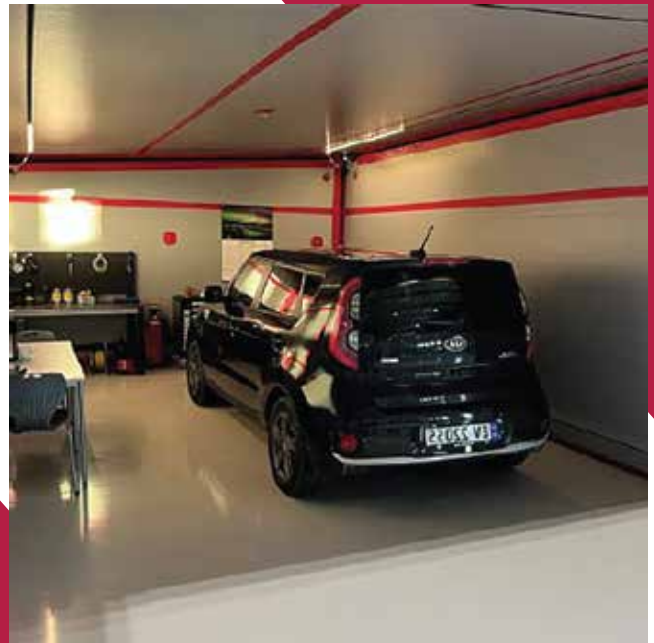
KEY FEATURES

RAPID CONSTRUCTIONS: Deployable within hours.

MODULAR SCALABILITY: Customizable configurations for various applications.

WEATHER RESISTANCE: Insulated and durable in extreme climates.

APPLICATIONS: MILITARY BASES, DISASTER RELIEF, AND HUMANITARIAN MISSIONS.





Hardline Hangars

Problem:

Protecting and maintaining military aircraft and vehicles in field conditions is challenging with traditional infrastructure.

Solution:

Hardline Hangars provide scalable, lightweight, and durable solutions for operational and storage needs.

KEY FEATURES

CUSTOMIZABLE SIZES: Built to fit aircraft and vehicle specifications.

RAPID DEPLOYMENT: Quick assembly in any environment.

EXTREME DURABILITY: Resistant to harsh weather conditions.

APPLICATIONS: AIRCRAFT MAINTENANCE, STORAGE, AND PROTECTION IN FIELD ENVIRONMENTS.



Hardline Spectre Shelter

Problem:

Operators in the field require secure, comfortable, and concealed sleeping accommodations.

Solution:

The **Spectre Shelter** delivers a compact, signature-mitigating shelter for tactical environments.



KEY FEATURES

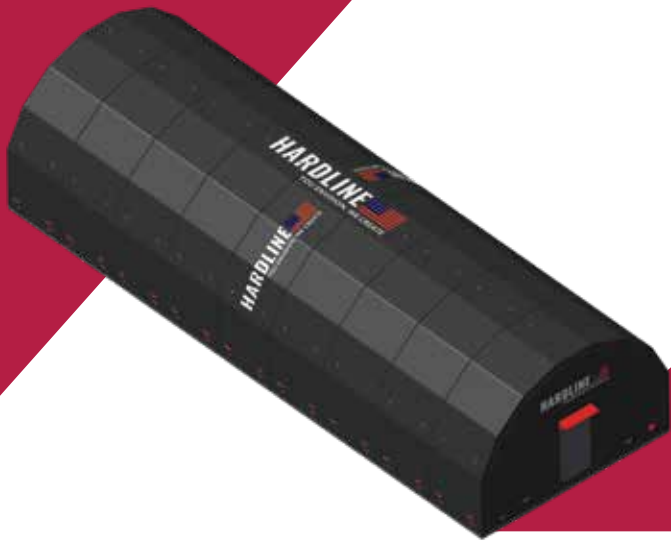
THERMAL SIGNATURE MITIGATION: Ensures stealth and safety.

PORTABLE AND LIGHTWEIGHT: Deploys in minutes.

ENVIRONMENTAL CONTROL COMPATIBILITY: Optional: Provides heating and cooling.

APPLICATIONS: COVERT SOF OPERATIONS, TACTICAL FIELD DEPLOYMENTS, FORWARD OPERATING BASES AND HUMANITARIAN AID.





Hardline Spectre Shelter XL

Problem:

Larger teams and command units require scalable, robust shelter solutions with next generation environmental security and comfort.

Solution:

The **Spectre Shelter XL** is a modular, scalable solution for team and command operations.

SPECIFICATIONS:

Dimensions: 20 ft x 41 ft x 13 ft 6 in
(6.1 m x 12.5 m x 4.1 m) at peak.

MODULAR LENGTH: Expandable in 2.1-meter
(7 ft) increments.

KEY FEATURES

FULLY INSULATED: Provides heating and cooling with battery-powered heat pumps.

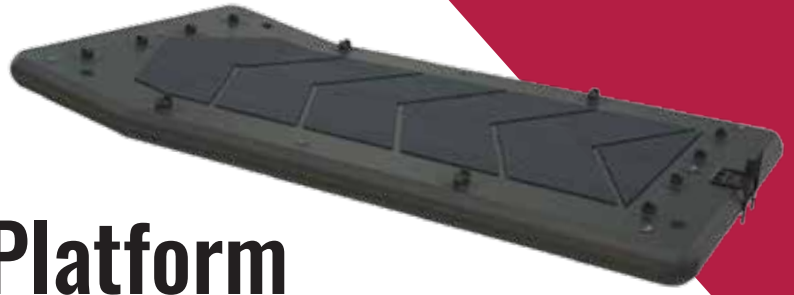
WEATHER RESISTANT: Built to withstand rain, snow, and wind.

SCALABLE: Configured for command centers, barracks, or medical facilities.

APPLICATIONS: FIELD HEADQUARTERS, BARRACKS, DISASTER RELIEF, AND MEDICAL OPERATIONS.



Barracuda Aquatic Mobility Platform



Problem:

Military operations often require crossing water barriers, and traditional bridges or predictable crossing points can compromise operational security.

Solution:

The **Barracuda Platform** enables vehicles and equipment to cross water at any location, avoiding predictable choke points and enhancing tactical flexibility.

KEY FEATURES

LOAD CAPACITIES: Models available for 5,000 lbs, 10,000 lbs, 20,000 lbs, 30,000 lbs, and 40,000 lbs.

SILENT OPERATION: Battery-powered motors minimize noise, ensuring stealth.

RAPID DEPLOYMENT: Lightweight and portable for quick assembly.

APPLICATIONS: TACTICAL VEHICLE TRANSPORT, AMPHIBIOUS OPERATIONS, AND EMERGENCY LOGISTICS.





Manta Catamaran

Problem:

Maritime operations face challenges such as short loiter times and a lack of stable platforms for sensors and defense systems.

Solution:

The **Manta Catamaran** is a versatile marine platform designed for applications that include: long-loiter maritime patrol, ferry and logistics, and Unmanned Surface Vessel (USV) operations.

KEY FEATURES

HEAVY FUEL AND ENERGY STORAGE: Supports extended operational durations.

CO-GENERATION TECHNOLOGY: Generates power for onboard systems and equipment.

CUSTOMIZABLE PAYLOADS: Accommodates radar, sensors, and weaponry.

STABILITY: Operates effectively in various sea states.

USV INTEGRATION: Expandable capabilities as an unmanned surface vessel.

**APPLICATIONS: MARITIME SURVEILLANCE,
TACTICAL DEFENSE, RECONNAISSANCE,
AND EXTENDED MISSIONS.**



Hardline Helipad

Problem:

Remote operations often lack durable and deployable landing zones for helicopters, compromising mission efficiency and safety during aerial operations.

Solution:

The **Hardline Helipad** provides a lightweight, rapidly deployable platform designed for secure helicopter landings in diverse terrains, including rugged, snowy, or sandy environments.



KEY FEATURES

RAPID DEPLOYMENT: Lightweight and modular design for quick assembly.

DURABLE CONSTRUCTION: Built from military-grade materials to withstand extreme weather and heavy use.

PORTABLE AND SCALABLE: Can be produced in configurations that accommodate various helicopter sizes and operational requirements.

APPLICATIONS: REMOTE LANDING ZONES, FORWARD OPERATING BASES, DISASTER RESPONSE, AND TACTICAL AIR SUPPORT OPERATIONS.



Hardline Caribou Litter System / Transportation Sled

Problem:

Military and crisis operations require versatile transport systems for injured personnel and critical equipment across challenging terrains, with seamless transition between ground and air mobility.

Solution:

The **Caribou Litter System** is a durable, multi-functional sled that can be towed by snowmobiles or watercraft, hoisted by helicopters, and floated for flood and water rescues, ensuring versatile emergency response capabilities.

KEY FEATURES

DUAL-MODE MOBILITY: Designed for snowmobile towing and helicopter hoisting.

LIGHTWEIGHT AND DURABLE: Built from military-grade materials for extreme environments.

MODULAR AND CUSTOMIZABLE: Optional accessories for added protection and functionality.

APPLICATIONS: CASUALTY EVACUATION, EQUIPMENT TRANSPORT, SEARCH AND RESCUE MISSIONS, AND HUMANITARIAN AID.



Custom Product Engineering and Prototyping Services

Hardline offers tailored solutions to meet the unique demands of every mission. Our experienced team of engineers, including Special Operations Forces (SOF) veterans, collaborates with clients to design and prototype cutting-edge products.

Capabilities:

COLLABORATIVE DESIGN: Partnering with clients to ensure precision and mission alignment.

ADVANCED PROTOTYPING: Utilizing military-grade materials and rigorous testing protocols.

CUSTOM FUNCTIONALITY: Integrating unique features such as RF mitigation, modularity, and scalability.

RAPID DEVELOPMENT: Delivering prototypes on accelerated timelines.

Why Choose Hardline?

As a Service Disabled Veteran-Owned Small Business (SDVOSB), Hardline Supply brings unmatched expertise, innovation, and a mission-driven focus to every project. Our commitment to excellence ensures that every product meets the highest standards of quality, reliability, and operational success.

HARDLINE 

YOU ENVISION, WE CREATE

For more information, contact us at:

+1 (561) 343-8630

www.hardlinesupply.com